

DOWNLOAD NOW



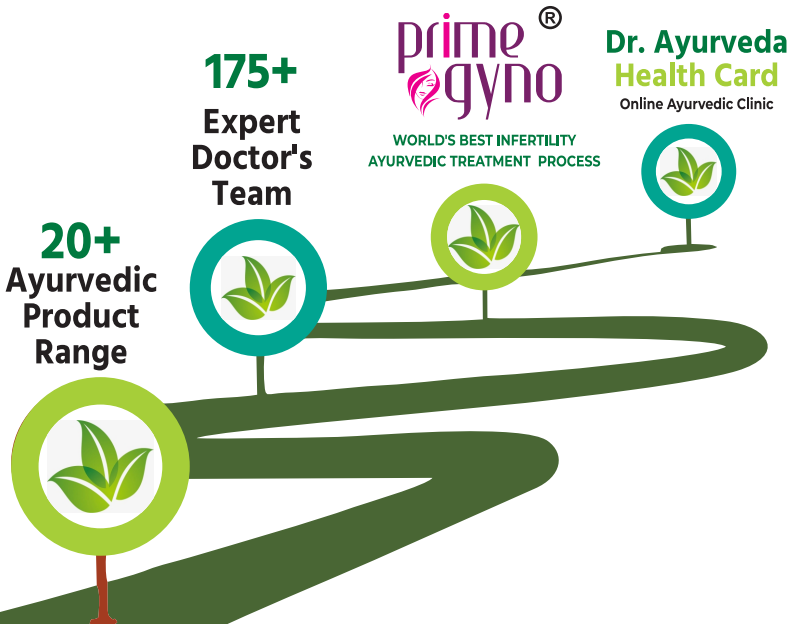
ऑनलाइन आयुर्वेदिक अस्पताल

DR. AYURVEDA

**ONLINE HOSPITAL**

वायुः पित्तं कफश्चेति त्रयो दोषाः समासतः  
विकृताविकृता देहं घ्नन्ति ते वर्तयन्ति च ।

Vata , Pitta & Kapha are the three doshas of the body.  
Perfect balance of three doshas leads to health,  
imbalance in Tridosha leads to disease.



आयुर्वेद को दे  
पहला चिकित्सा  
अवसर



# BREATH SHAFa

Herbomruth Liquid

दमा, खांसी, नजला, बलगम  
व एलर्जी का पक्का इलाज



## Indication :

Breath Shafa is an ayurvedic syrup that aids with respiratory tract regulation. It acts as a bronchodilator as well as a mucolytic expectorant. It helps in giving relief from cough, cold, bronchitis, allergic rhinitis and issues related to the respiratory system of an individual. It help in controlling asthma and in clearing the respiratory tract.

## Directions For Use:

- For adults, 10 ml of syrup with 20 ml of lukewarm water, twice a day
- For children, 2.5 ml of syrup with 10 ml of lukewarm water
- Or as advised by your healthcare practitioner

## Safety Information:

- Read the label carefully before use.
- Store in a cool and dry place, away from sunlight.
- Contraindicated in pregnancy and below 3 years.

## Ingredients

## Packing 200ml

<p>Piper longum Piper nigrum Zingiber officinale Eclipta alba Clerodendrum serratum</p>	<p>Tinospora cordifolia Ocimum sanctum Terminalia chebula Syzygium aromaticum Sesbania grandiflora</p>	<p>Curcuma longa Acorus calamus Adhatoda vasica Saindhava lavana Glycyrrhiza glabra</p>
---------------------------------------------------------------------------------------------------------	------------------------------------------------------------------------------------------------------------------------	---------------------------------------------------------------------------------------------------------

Note:-This product may get settled upon storage, which doesn't impact the quality or efficacy of the product. In such case please add warm water to the container and shake vigorously before use.



# BreathShafa+<sup>®</sup> LungsPrash

HANDMADE PRASH FOR LUNGS

दमा, खांसी, नजला, बलगम  
व एलर्जी का पक्का इलाज



## COMPOSITION:

Shwas Kuthar Ras - 500 mg,  
Laxmi Vilas Ras - 500 mg,  
Abhrak Bhasma - 250 mg,  
Praval Bhasma - 250 mg,  
Swarn Makshik - 250 mg,  
Sitopaladi Churna - 2 gm, Mal  
Sindoor - 12.5 mg,  
Chyawanprash - q.s.

## STORAGE:

Store in cool & dry place, away from direct sunlight.  
Keep the container tightly closed.  
Do not use if seal is broken.  
Taste, colour, & texture may vary from batch to batch.

## INDICATION:

Indicated in Bronchial asthma, COPD, Rhinitis, and Sinusitis. Also effective in healing lungs, enhancing lung capacity in patients with post-COVID and post-TB symptoms. It acts as a respiratory tonic helpful for various respiratory problems.

We are proud to carry forward a legacy of 4 generations in serving Ayurveda. Our recipes and products are the result of decades of dedicated research, crafted to meet the needs of modern-day lifestyle challenges. Founded by doctors, our mission is to offer exquisite Ayurvedic preparations that help solve and prevent today's health issues. Our range of prash is prepared in Desi Ghee, ensuring authenticity and rich, nourishing benefits.

## DOSAGE:

1 teaspoonful twice a day or as directed by the physician.



# PRIME GYNO

## Best Women Care

स्त्रियों के मासिक धर्म की अनियमितता  
एवं दर्द का सर्वोत्तम सहायक उपाय

### Indication :

#### Benefits in

- Irregular menstruation
- Hypermenorrhoea
- Unexplained infertility
- PCOS/PCOD,
- Leucorrhoea
- Post-menopausal syndrome.

#### Dosage :

Adults- 10-15 ml mix with 50 ml of water to be taken 3-5 days after your periods on an empty stomach in the morning and in evening after 2 hours of dinner for 15 days to 3 months or as advised by your doctor.

Prime Gyno is the scientifically formulated unique combination of herbs to maintain & provide a natural way for restoring female physiology and reclaiming feminine innocence. It not only ensures safety and efficacy but also assures health in female through cleansing, nourishing and strengthening whole body.



### Ingredients

### Packing 200ml

Asparagus racamorus (Shatavari) HemidesmusIndicus (Indian Sarsaparilla)  
Nordostachys Jatamansi (Jatamansi) Raspberry leaf (Rasabhari)  
Tribulus Terrestris (Gokharu) SaracaIndica (Ashoka) Withania somnifera  
(Ashwagandha) ,Putranjiveek and other ingredient.

**CAUTION: To be taken under medical supervision.**



# BOOST MASTER

## Ayurvedic Prash

सहनशीलता और जोश बढ़ाने के लिए

### Indication :

Boost Master has got all that a man wants from a health supplement. It is a successful and unique formulation of rare and precious herbs that works as a natural sex enhancer. Its unique formulation helps in resolving all of your sex related problems and makes your married and sex life more enjoyable and fulfilled. Boost Master works as Unani herbal tonic which gives you completely satisfaction of your sexual problems. Boost Master has been in development for over 5 years and was very effective in improving sexual disabilities like Erectile Dysfunction, Low Libido, Impotency, low sperm count etc. It contains a special blend of natural herbs and extracts which are act as natural sex enhancers or aphrodisiacs.



### DOSAGE:

One Tea spoonful (10gm) to be taken before 2 hrs of intercourse / Sex .  
Do not swallow to be chewed with cold milk or As directed by physician.

### Ingredients

### Packing 125gm

Asgandh Nagori and Aqar Qarah, Safed Musli, Taal Makhana, Gokhru powder and Lajwanti, Loha bhasma, Triwang Bhasm and Mandoor bhasma, Kalonji, Jawetri, Maal Kagni, Dalchini and Jaifal, Bedana, Pumba Dana, Beej band, Kawachbeej, Suranjan, Sighadakhushk, Dhavda Gond and Azraki, Zanjabeel and Kali Moosli, Badam and Magze Kharbooja, Roomi Mastagi, Behman Surkh, Behman Sufed and Salab Punja, Qand Sufed, Tudari, Indian Ginseng: also called ashwagandha

### Precautions

- Do not over dosage the recommended dose.
- Keep away from children's reach.
- Self medication is not recommended.
- Store in dry and cool place.
- Close medicine cap tightly after every use.
- Keep medicine in original package and container.



# Ortho Raj

## Vathamrutha Liquid

हड्डी व जोड़ रोगों से छुटकारा

### Indication :

- 1.) Ortho Raj is one of the three doshas. Pain in vata disorders is often attributes to an imbalance in the vata dosha so Vathaammrutha balances the vata in body and relief the pain.
- 2.) When there's excess vata, it can lead symptoms such as pain, stiffness, and discomfort so patient can use this medicine to get relief from these symptoms.
- 3.) It also reduces inflammation, edema and good for stability and flexibility of joints.
- 4.) Indications:-Joints Pain, Neuritis, Neck pain, Back pain, Rheumatoid Arthritis, Spondylitis, Osteoarthritis, Vata disorders

### DOSAGE:

10 to 15 ml with four times water before food or as directed by the physician.



### Ingredients

Packing 200ml

- ➡ **Rasna(Pluchea lanceolata)** - Agrya Dravya for Vatahara & Amapachana
- ➡ **Kokilaksha (Astercantha longifolia)** -Amahara removes toxin from blood
- ➡ **Vayu vidanga (Embelia ribes)** and **Manjastha (Rubia Cordifolia)** - krimi and vishahara , which inturn helps in reducing ama.
- ➡ **Ativisa (Aconitum heterophyllum)- Vacha (Acorus calamus)** and **Hingu (Ferula asafoetida)** - Helps in quick action, pachana and vataanulomana.
- ➡ **Guggul (Commiphora mukul)** - Dashmoola shodita guggul :-Vishesha Vatahara
- ➡ **Pushkaramulam (Inula racemosa), Daruharidra (Berberis aristata)** and **Karpooram (Cinnamomum Camphora)** - Helps in deepana , pachana and kapha vatahara.

### Safety Information:-

- Do not exceed the recommended dosage.
- Read the label carefully before use.
- Store in cool, dry place and away from direct sunlight.
- keep out of reach of children.
- Keep at least half an hour gap between food/drink/any other medicine / allpathic medicine



# Nainamrit

## Eye Care Glass Removal

आखों की सम्पूर्ण सुरक्षा और चश्मे हटाने में सहायक

Indication : Packing 15ml



1. **\*Relief from Eye Strain:\*** Helpful for reducing symptoms of tired and strained eyes, especially after prolonged screen time or exposure to bright light.
2. **\*Redness and Irritation:\*** May soothe and alleviate redness, itching, or irritation caused by environmental factors like dust, smoke, or allergens.
3. **\*Dry Eyes:\*** Useful for providing moisture and relieving dryness in the eyes.
4. **\*Preventive Eye Care:\*** Used for general eye health maintenance, including nourishing the eyes and improving vision over time.
5. **\*Support for Eye Fatigue:\*** May help reduce fatigue in the eyes caused by reading, computer use, or other focused tasks.
6. **\*Soothing and Cooling Effect:\*** Provides a cooling effect that can be soothing for eyes exposed to heat or during hot weather.
7. **\*Support for Eye Infections:\*** Traditional ingredients known for their antibacterial or antiviral properties may help in managing mild eye infections.

### DOSAGE:

- \*Adults:\*** Instill 1-2 drops in each eye, 2-3 times daily, or as directed by a healthcare professional.
- \*Children:\*** Instill 1 drop in each eye, 1-2 times daily, or as directed by a healthcare professional.

## Ingredients

➔ Rosa centifolia  
 ➔ Eclipta prostrata  
 ➔ Boerhavia diffusa  
 ➔ Vitex negundo  
 ➔ Terminalia chebula  
 ➔ Curcuma longa  
 ➔ Mentha sylvestris

➔ Sodii chloridum  
 ➔ Sentalum album  
 ➔ Pterocarpus santalinus  
 ➔ Ocimum album  
 ➔ Azadirachta indica  
 ➔ Extractum berberis  
 ➔ Mel

### Safety Information:-

1. **\*Shake well before use.\***
2. **\*Wash hands thoroughly before applying the eye drops.\***
3. **\*Avoid touching the tip of the dropper to any surface, including the eye, to prevent contamination.\***
4. **\*Close the bottle tightly after use.\***



# C-Cut

Kidney Stone Removing

पत्थरी का रामबाण ईलाज



## Indication :

C-cut churna is formulated to support the management and prevention of kidney stones. It helps to dissolve existing stones, ease their passage, and reduce discomfort. This churna also promotes healthy kidney function, prevents the formation of new stones, and supports overall urinary tract health.

## DOSAGE:

1 tablespoon twice a day or as directed by your healthcare provider

## Ingredients

## Packing 150gm

- Patthar chur
- khas
- Netrabala
- Nagarmotha
- Elaichi
- Dhaniya
- Geru

- Amla
- Tag
- Anar
- Amaltash
- Punarnava
- Gokhru

## Safety Information:-

- Use this product under the guidance of a qualified Ayurvedic practitioner or healthcare provider, especially if you are pregnant, nursing, or have a medical condition.



# D-Cut

Diabetes & Blood Sugar Churan

शुगर का रामबाण ईलाज



## Indication :

D-cut churna is formulated to help manage elevated blood sugar levels and support healthy glucose metabolism. It is beneficial for individuals with prediabetes, type 2 diabetes, and those experiencing blood sugar fluctuations. For best results, use under the guidance of an Ayurvedic practitioner.

## DOSAGE:

Soak 1 tablespoon of churna in water overnight. In the morning, strain and drink the water on an empty stomach.

## Ingredients

Packing 150gm

- Gurmar (Panchang)
- Jamun (Seed)
- Hard (Fruit)
- Imli (Fruit)

- Ashwagandha (Mool)
- Sahatra ( Panchang)
- Karela ( Fruit)
- Methi (Seed)

## Safety Information:-

- Store in cool ,dry place,away from direct sunlight. Keep out of reach of children.
- Do not exceed the recommended dosage unless advises by your healthcare provider.
- Contraindicated during pregnancy.



# Tridosha CHOLESTEROL CARE



## कोलेस्ट्रॉल केयर जूस के फायदे

कोलेस्ट्रॉल केयर जूस एक प्राकृतिक पेय है जो शरीर में कोलेस्ट्रॉल के स्तर को नियंत्रित करने में मदद करता है। इसके विभिन्न लाभ निम्नलिखित हैं:

**एलडीएल कोलेस्ट्रॉल को कम करना :** यह जूस खराब कोलेस्ट्रॉल (एलडीएल) के स्तर को कम करने में सहायक होता है, जिससे हृदय रोगों का खतरा कम होता है।

**एचडीएल कोलेस्ट्रॉल को बढ़ाना:** यह अच्छा कोलेस्ट्रॉल (एचडीएल) के स्तर को बढ़ाता है, जो रक्त वाहिकाओं की सफाई में मदद करता है और हृदय को स्वस्थ रखता है।

**रक्तचाप को नियंत्रित करना :** इस जूस में मौजूद तत्व रक्तचाप को नियंत्रित करने में मदद कर सकते हैं, जो उच्च रक्तचाप के मरीजों के लिए लाभकारी हो सकता है।

**पाचन तंत्र को सुधारना :** कोलेस्ट्रॉल केयर जूस पाचन तंत्र को स्वस्थ रखता है और



पाचन को सुधारता है, जिससे शरीर में पोषक तत्वों का अवशोषण बेहतर होता है।  
**वजन कम करना :** यह जूस मेटाबॉलिज्म को बढ़ावा देता है और वजन घटाने में मदद कर सकता है, जिससे मोटापे के कारण होने वाली बीमारियों का खतरा कम होता है।

**प्रतिरक्षा प्रणाली को मजबूत करना :** इसमें मौजूद एंटीऑक्सीडेंट्स और विटामिन प्रतिरक्षा प्रणाली को मजबूत बनाने में मदद करते हैं, जिससे शरीर विभिन्न संक्रमणों और बीमारियों से लड़ने में सक्षम होता है।

**डिटॉक्सिफिकेशन :** यह जूस शरीर से विषाक्त पदार्थों को बाहर निकालने में मदद करता है, जिससे त्वचा में निखार आता है और शरीर की आंतरिक सफाई होती है।

**ऊर्जा स्तर को बढ़ाना :** यह जूस शरीर को ऊर्जा प्रदान करता है और थकान को दूर करने में मदद करता है।

इन फायदों को पाने के लिए कोलेस्ट्रॉल केयर जूस का नियमित सेवन करना चाहिए, लेकिन इसे अपने चिकित्सक की सलाह से ही अपने आहार में शामिल करें।



# Youth Care

नशा मुक्ति के लिए आयुर्वेदिक दवा



## Indication :

Powder is effective for alcoholic personalities who are into alcoholic habits, tobacco habits, gutkha chewing habit, zarda habit, narcotic abuse, smoking habit etc. Regular intake of this medicine decreases the craving of all above mentioned things gradually. Continuous and prolonged use of this medicine decreases craving of bad things.

## DOSAGE:

5gm-5gm powder 2-3 times a day. with water or milk as directed by the physician.

If you are suffering from any prolonged illness or using other medication, consult your medical practitioner before use.

\*Not to be consumed by pregnant or lactating women

## General

Ingredient	Botanical Name	Quantity (gm)
अश्वगंधा (Ashwagandha)	Withania somnifera	25 gm
ब्राह्मी (Brahmi)	Bacopa monnieri	20 gm
शंखपुष्पी (Shankhpushpi)	Convolvulus pluricaulis	15 gm
वचा (Vacha)	Acorus calamus	10 gm
हरिद्रा (Haridra)	Curcuma longa	10 gm
गिलोय (Giloy)	Tinospora cordifolia	10 gm
पिप्पली (Pippali)	Piper longum	10 gm

## Safety Information:-

- Store in cool ,dry place,away from direct sunlight. Keep out of reach of children.
- Do not exceed the recommended dosage unless advises by your healthcare provider.
- Contraindicated during pregnancy.





Powered By : INSTANT AUSHDHALYA PVT. LTD.



**INSTANT AUSHDHALYA PVT. LTD.**



Vivek Vihar, New Sanganer Road, Jaipur, Rajasthan, 302019  
Near Shyam Mandir, Janta Bhawan Road, Sirsa (Haryana) 125055

**HELPLINE NO. 9992223039**

E-Mail :- [info@iaushdhalya.com](mailto:info@iaushdhalya.com) | Website :- <https://iaushdhalya.com> | [www.primegyno.com](http://www.primegyno.com)



For Health Card Registration

**[www.drayurveda.online](http://www.drayurveda.online)**

